

Wireless Bluetooth Stereo Speaker

COWON SP2

OneTouch Pairing using NFC | Bluetooth V4.0 | Wireless Music Streaming
Hands-free Speakerphone | For Smartphones & Bluetooth Devices | USB
Rechargeable Battery & LED Status Indicator | AUX-IN | Improving Sound
by Echo Cancellation

+ Copyright Notice

Thank you for purchasing COWON product.

General

- + COWON is the trademark of COWON SYSTEMS Inc.
- + All contents in this manual are protected under copyright law.
- + All the other product(s) and service(s) listed in this manual are registered trademark and service of the corresponding copyright owner(s).
- + All rights to this program are reserved by COWON SYSTEMS Inc. and protected under copyright law.
- + This manual is based on the specifications of the product available at the point of publishing it. Note that the sample sentences, charts, pictures given as an example, detailed functions of a product, specifications of H/W and S/W recorded in this manual are subject to change without notice.

Product specification may change without notice.

Images contained in this manual may differ from the actual product.

+ Usage Precautions

As these precautions are provided for the correct use of the product as well as user safety, be sure to familiarize yourself with them. The company will not be responsible for any accident that may occur due to the failure to heed these precautions.

- + Do not use this product for other purposes than those described in this manual.
- + Do not attempt to disassemble the product. Disassembly will void the warranty and the unit will be permanently disqualified from any warranty services.
- + Do not drop the product onto a hard surface. This may result in malfunctions and/or unit failure, voiding the warranty.
- + If you find any abnormalities with the battery such as swelling, stop using the product.
- + Be careful the product not be torn or ruptured by any sharp materials, such as animal's teeth.
- + Do not expose the product to water or put it in a damp or humid location for an extended period of time. If the product is damaged from moisture as described above, product failure would be classified as a user's misuse.
- + Touching the product with wet hands may cause damages and malfunctions.
- + Using the product in places with high occurrences of static electricity may cause malfunctions.
- + Keep the product away from magnets and direct magnetic fields, as they can cause malfunctions.

+Bluetooth Wireless Communication Technology

Brief introduction

Bluetooth is a standard of close range wireless communication technology that was drawn up by Ericsson, IBM, Intel, Nokia and Toshiba. With Bluetooth technology, we can achieve the highest transmission rate among mobile phones, computers, printers, PDAs and other devices. The max transmission range of class II is 10 meters while the max transmission ranges of class I can reach up to 100 meters.

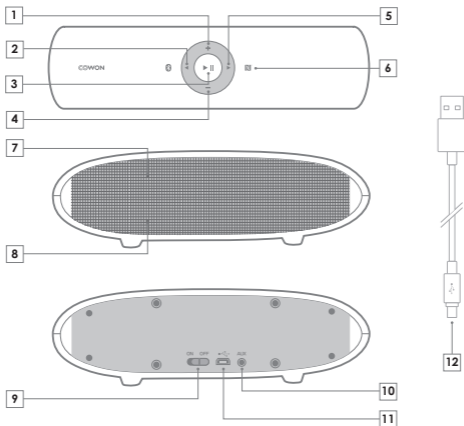
+ Product Overview

Enjoy high-quality stereo music with COWON SP2. SP2 is able to wirelessly connect to a smart phone or Bluetooth transmitter via Bluetooth.

- + COWON SP2 plays music close to the quality of the original CD's by supporting the apt-X codec.
- + COWON SP2 supports NFC(Near Field Communication). It can quickly connect with Bluetooth devices supporting NFC function.
- + COWON SP2 is a Bluetooth stereo speaker. It supports the following Bluetooth profiles.
 - HSP : Headset Profile
 - HFP : Hands-free Profile
 - Answer a call, end a call and reject a call
 - Redial last number
 - Adjust the volume
 - Microphone mute
 - A2DP : Advanced Audio Distribution Profile
 - Enjoy music wirelessly
 - Adjust the volume
 - Remote control pause/play
 - Remote control previous/next track
 - Remote control fast forward/rewind
 - AVRCP : Audio / Video Remote Control Profile
- + Easy to switch between the call and music, you will not miss any incoming calls while listening to music.
- + Every time when SP2 is turned on, it will connect to a last connected device automatically.

Before Using This Product

+ Names of Parts and Functions



1	Volume Up(+)	7	Microphone
2	Previous Song / Fast Rewind	8	LED Status Indicator
3	Play / Pause, Pairing	9	ON / OFF Button : Power Switch
4	Volume Down(-)	10	AUX-IN Port
5	Next Song / Fast Forward	11	USB Port
6	NFC Sensor	12	USB Cable

Before Using This Product

+ Charging

1. Plug the USB cable into the USB port of a PC.
2. LED indicators display the battery charge status.
 - Red light on : Charging
 - Red light off : Finish charging
3. It takes about 3 hours to finish charging.

- COWON SP2 can also be charged by a Micro USB smart phone charger.
- For normal charge, please turn off SP2.
- When charging SP2 for the first time or if SP2 has not been charged for an extended time, fully charge the battery before use.
- When the battery is low, SP2 emits a string of warning tones every 1 minutes and the red LED flashes. Please recharge the battery of the speaker.
- SP2 may not be charged properly when it is connected to a USB hub. Please connect SP2 directly to a USB port on the back of a PC.

Using This Product

+ Turning On / Off SP2

Functions	Operation	LED indicator	Prompt tone
Turning on	Make the power switch ON	Blue LED on one second	4 rising tones
Turning off	Make the power switch OFF	Red LED on one second	4 falling tones

+ How to Enter Pairing Mode

■ How to enter pairing mode

Ensure SP2 is on. If not, please turn it on first and press ►|| button long about 4~6 seconds until red and blue LEDs flash alternately.

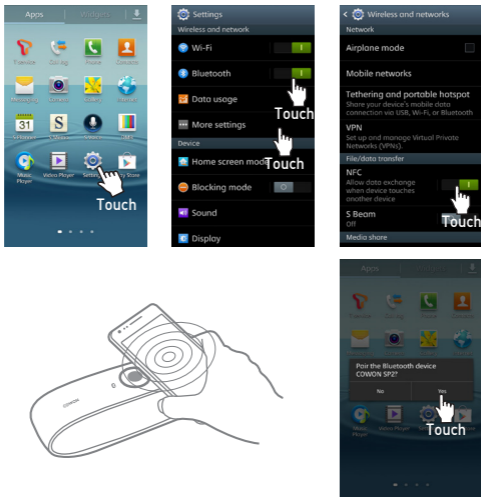
- Pairing mode will last 2 minutes. If no devices can be connected after 2 minutes, it will return to standby mode automatically.
- If SP2 does not play music even though it has already connected with a device, press ►|| button long to enter pairing mode.
- You will hear 2 rising tones when SP2 enters pairing mode.

Using This Product

+ Pairing and Connecting with Mobile Phone

■ Pairing SP2 with a Bluetooth mobile phone via NFC

COWON SP2 supports NFC function. It can quickly connect with Bluetooth mobile phone via NFC.



1. Touch Settings button into setting interface.
2. Activate Bluetooth function.
3. Touch More settings interface to activate NFC function.
4. Please turn on SP2 first. Keep the NFC chip of a mobile phone and the speaker within 1 centimeter.
5. SP2 will enter pairing mode automatically. There will be a request from the mobile phone 'Pair the Bluetooth device COWON SP2?' with prompt tone.
6. Click 'Yes' to confirm. Now, SP2 is paired and connected with the mobile phone.

+ Pairing and Connecting with Mobile Phone

- The screen of a mobile phone must be in unlocked mode during pairing via NFC.
- The NFC chip of a mobile phone and SP2 must be in 1 centimeter during pairing.
- The pairing procedures are subject to different models of mobile phones. Please refer to the user manual of your mobile phone for further information.
- Please refer to 'Pairing SP2 with Bluetooth Mobile Phone via Bluetooth' below when mobile phones are not NFC enabled.

■ Pairing SP2 with Bluetooth mobile phone via Bluetooth

1. Make SP2 enter pairing mode.
(please refer to 'How to enter pairing mode').
2. Activate your mobile phone's Bluetooth function and set your mobile phone to search for Bluetooth devices within range. Select 'COWON SP2' from the list of devices.
3. Enter a password or a PIN No. '0000' following the instruction.
4. If prompted by your mobile phone to connect, select 'Yes'.
5. After successful pairing, choose and connect 'SP2' from the list of devices shown on a mobile phone.
6. After successful connecting, blue LED of SP2 will flash twice every 4 seconds .

- Keep SP2 and a mobile phone within 1 meter when pairing.
- If the mobile phone supports Bluetooth V2.1, password is not required.
- If pairing is failed, please turn off SP2 first and re-pair following steps 1~6 mentioned above
- After successful pairing, SP2 and the mobile phone will remember each other. They do not need to re-pair next time. The speaker can remember 8 paired devices. When the number of paired devices exceeds 8, the first one will be replaced.
- Every time when SP2 is turned on, it will connect to a last connected device automatically. If you want to pair it with other devices, please turn off the Bluetooth function of the last connected device first and pair the speaker with the new device following steps 1~6 mentioned above.

■ Pairing SP2 with Bluetooth transmitter via Bluetooth

1. Make SP2 enter pairing mode.
(Please refer to 'How to enter pairing mode').
2. Turn on the Bluetooth transmitter and make it enter pairing mode. It will search for Bluetooth devices automatically and send a pairing request.

Using This Product

3. When SP2 requests to enter a PIN No., the transmitter will response '0000' automatically.
4. After successful pairing and connecting, blue LED of SP2 flashes twice every 4 seconds.

- Keep SP2 and a Bluetooth transmitter within 1 meter when pairing
- The pairing password of SP2 is '0000'. The speaker can only pair with a Bluetooth transmitter whose pairing password is '0000'.
- If pairing still fails after several tries, please refer to the Bluetooth transmitter's user manual for further information.

+ Call with SP2

■ Basic operation

SP2's highly sensitive built-in microphone is suitable for answering calls or redialing the last number.

Functions	Status of SP2	Operation	Prompt tone
Cancel call	Calling	Short press ► button once	One short tone
Answer call	Incoming call ringing	Short press ► button once	Two rising tones
Reject a call	Incoming call ringing	Long press ► about 2 seconds and release it until listen a tone	Two falling tones
End a call	During a call	Short press ► button once	One short tone
Volume up	During a call	press + button	
Volume down	During a call	press - button	
Transfer conversation to mobile phone	During a call	Long press ► button about 2 seconds	One short tone
Transfer conversation to SP2	During a call	Long press ► button about 2 seconds	One short tone

+ Call with SP2

Microphone mute	During a call	Double click ► button	Two falling tones
Cancel mute	During a call (microphone mute)	Double click ► button	Two rising tones
Voice dial (Siri, S-Voice)	Standby mode (connected device)	Double click ▷ button	One short tone
Redial the last number	Standby mode (connected device)	Double click ► button	One short tone

■ Three-way call operation

Functions	Status of SP2	Operation
Answer new call and end current call	There is a second incoming call	Short press ► button once
Answer new call and retain current call	There is a second incoming call	Double click ► button
Switch calls	Keep conversation	Double click ► button
End current call and switch retain call	Keep conversation	Short press ► button once

- Not every mobile phone supports all the functions listed above.
- Functions and prompt tones may vary depending on different mobile phones.
- When the volume is adjusted to max, or min., you will hear one prompt tone.
- When pressing the answer button on some mobile phones, the call will be transferred to the mobile phone. You can switch the call to SP2 by using the conversation switch button or through operating on the mobile phone. Please refer to your mobile phone user manual for further information.

+ Playing Music

When SP2 connects to a mobile phone or Bluetooth transmitter that supports A2DP, you can enjoy music wirelessly.

Functions	Status of SP2	Operation
Volume up	Playing music	Short press + button
Volume down	Playing music	Short press – button
Previous song	Playing music	Short press < button
Next song	Playing music	Short press > button
Fast rewind	Playing music	Long press < button
Fast forward	Playing music	Long press > button
Pause	Playing music	Short press ► button once
Play	Pausing	Short press ► button once
Line-in input	Turn on	Plug 3.5mm audio line into AUX-IN port of SP2

- When playing music on some mobile phones, the music will be transmitted to the mobile phone's speaker instead of SP2. You have to select 'transmit the sound via Bluetooth' in the settings menu and choose 'COWON SP2' as a speaker device. The music will be transmitted to SP2. Please refer to your mobile phone user manual for further information.
- When the volume is adjusted to max. or min., you will hear one prompt tone.
- If you want to remote control previous/next song, pause/play, it needs your Bluetooth mobile phone or Bluetooth transmitter paired with SP2 to support AVRCP profile. Please refer to the user manual of your mobile phone or Bluetooth transmitter for further information.
- Even though you plug 3.5mm audio cable into SP2, the Bluetooth will not disconnect when SP2 is connected with a mobile phone via Bluetooth. Either 3.5mm line-in music is not available until Bluetooth music pauses.
- SP2 gives priority to Bluetooth. In the status of playing music via line-in or USB cable, the voice will switch to Bluetooth mode automatically when there is an incoming call. SP2 returns to line-in or USB cable mode automatically when the call ends.

+ USB Function

SP2 supports USB data transmission function. You can use SP2 as a PC speaker via USB cable.

1. Turn on SP2 and connect it to a PC using a USB cable.
2. 'Installation Device Driver Software' window pops up on the PC screen.
3. Installation starts automatically. Sounds from the PC confirm the installation process is complete.
4. SP2 buttons also control the music that is being played by PC.

- USB mode supports all of the functions of Windows XP, Windows 7 and Windows 8.
- When sounds are not heard normally, check that Audio Output Device is turned on at Settings – Hardware and Sound.

+ LED Status Indicator

■ Charging

LED indicator	Status of SP2
Red LED on	Charging
Red LED off	Finish charging

■ Pairing with Bluetooth device

LED indicator	Status of SP2
Red and blue LEDs flash alternately	Pairing mode
Blue LED flashes once every 2 seconds	Not connect with device
Blue LED flashes twice every 4 seconds	Connect with device
Blue LED flashes continuously	Calling/incoming call
Blue LED flashes once every 1 seconds	During a call
Red LED flashes instead of blue LED	Low battery

+ Indication Tone

Indication tone	Status of SP2
Continuous two "du du" tones every 10 seconds	Conversation mode and microphone mute
A string of warning tones every 1 minutes	Low battery

+ Factory Reset (Initialization)

In the status of standby mode, when SP2 is not connected with a Bluetooth device, press ►|| and volume up '+' buttons long simultaneously about 5 seconds and release them when red and blue LEDs flash simultaneously, you will hear two 'du du' tones.

- After factory reset, the list of paired devices will be deleted, SP2 enters pairing mode automatically when it is turned on. Re-pair and connect with Bluetooth devices.
- Factory Reset(Initialization) is recommended when there are multiple pairing failures and/or malfunction of SP2.

Other Functions

+ Specifications

Bluetooth version	Bluetooth V4.0
Bluetooth profiles	HSP, HFP, A2DP, AVRCP
Codec	apt-X, SBC
Operating distance	10 meters (Max.)
Output power	4W RMS (2W X 2)
Music time	Approx. 10 hours
Speaker standby time	Approx. 800 hours
Battery charging	Approx. 3 hours
Charging input	DC 5V / 500mA
Battery capacity	1250mAh
Dimension and weight	200mm (W) x 61mm (H) x 49mm (T) / 340g

+ Troubleshooting

- + The red LED flashes instead of the blue LED.

Battery is low. It needs to be recharged.

- + The red LED is off when charging.

Please make sure the charging device connects with SP2 well.

If you did not use SP2 for a long time, the battery may dry up. At this time, you have to charge the battery for 30 minutes. The red LED will be on.

- + Interruption occurs during music playback.

Make sure the distance between SP2 and the mobile phone is in the available Bluetooth range.

According to the Bluetooth standard, the maximum available range of Class II speaker is 10 meters. It varies under different environments.

- + My mobile phone cannot search and find SP2.

The mobile phone will not find SP2 if the speaker and a mobile phone are not under the pairing mode. Make sure SP2 is under the pairing mode and in the effective working range. Then the speaker can be paired and connected.

- + I cannot hear any sound from SP2.

Make sure SP2 is switched on.

Make sure the volume is not too low or muted.

Make sure the speaker connects with the mobile phone correctly.

Make sure the distance between SP2 and the mobile phone is in the available Bluetooth range.

- + A voice is not clear during a phone call.

Make sure the mobile phone is in the strong signal area.

Make sure SP2 and a Bluetooth device are in the available range.

- + Buttons do not work when playing music.

This function works when your Bluetooth device supports AVRCP(Audio/Video Remote Control Profile)

COWON's Warranty Policy

COWON REPAIR CENTERS

Center	Center Location	Web Site
Korea Service Center	Seoul, Korea	www.cowon.com
Japan Service Center	Tokyo, Japan	www.cowonjapan.com
USA, Canada Service Center	Irvine, USA	www.jetaudio.com
WorldWide Service Center	Seoul, Korea	www.cowonglobal.com / Support - Q&A Board

[Important Notes]

* Please retain the original dated sales receipt. Proof of the date of purchase will be required with any request for warranty service. And in order to expedite the repair process, COWON recommends you to complete the below form at the time of purchase and present it to our repair center with the receipt.

Model Name		Dealer's Tel No.	
Serial No.		Dealer's Name, Sign or Stamp	
Country of Purchase			
Date of Purchase			

The terms and conditions of this COWON's Warranty(hereafter referred to as "Warranty") are only valid in the countries that the COWON product (hereafter referred as "Product") was originally purchased.

As warranty service is only available from within the country where the products were originally purchased, you may be required to ship products, at your expense, to the authorized service center for the country where the products were purchased. COWON will repair or replace products if they fail to function properly during the warranty period, subject to any conditions and/or limitations stated herein.

Warranty Coverage

COWON warrants products and accessories against defects for a period of one year and three months respectively from the date of original purchase. If a defect arises and a valid claim is received by COWON within the Warranty Period, at its option, COWON will repair or replace the product without charge, using new or refurbished replacement parts.

But the shipping expense may be required to be paid according to the region and the warranty service may take longer if service parts are not available.

Exclusions and Limitations

This warranty does not apply when failure is due to shipping damage, accident, alteration, modification, unauthorized service, misuse, abuse, use with incompatible accessories or attachments (such as third party's service parts or accessories), failure to follow COWON's operation, maintenance or repacking instructions, failure to use items supplied by COWON (such as adapters and cables), or claims made after the duration of this warranty, and failure with the serial number which is altered, defaced or removed, and natural calamity, force majeure, unforeseeable accidents and any other external factors beyond the control of COWON.

COWON makes no other warranties, express, implied, or of merchantability or fitness for a particular purpose for products.

Note: Before you deliver your product for warranty service it is your responsibility to backup all data, including all software programs.
COWON is not responsible for data that may be lost or damaged during transit or a repair.

www.cowon.com

DIGITAL PRIDE.
COWON